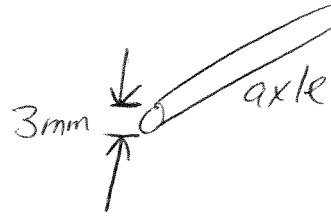


# Drill Holes

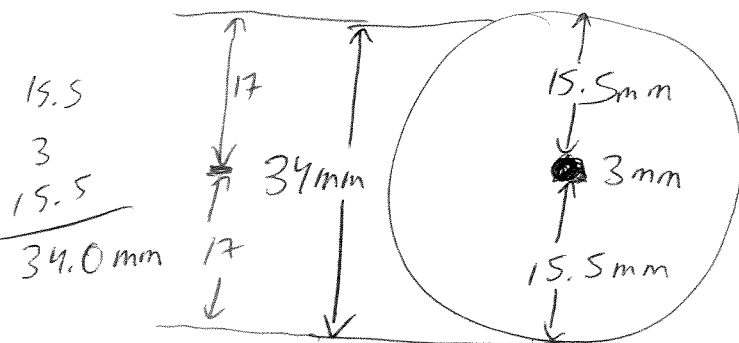
Drill bit for straw insert  $\frac{5}{32}$ "



front wheel - 34mm - centre 17mm

back wheel - 40mm - centre 20mm

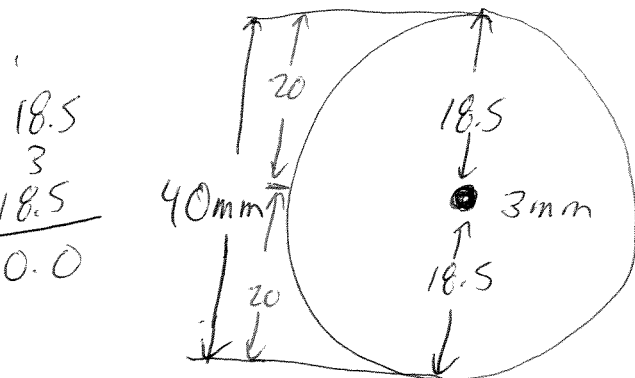
## Front wheel



$17 - 6 = 11\text{mm}$   
 distance from outer wheel to hole  
 $15.5 - \text{eyelet}(6\text{mm}) = 9\text{mm}$

$\therefore$  Drill the front hole no more than 9mm above the bottom.

## Back wheel



$20 - 6 = 12$   
 $18.5 - 6\text{mm} \approx 12\text{mm}$

$\therefore$  Drill the back hole no more than 12mm above the bottom.